

## Monthly Weather Summary in Thailand September 2018

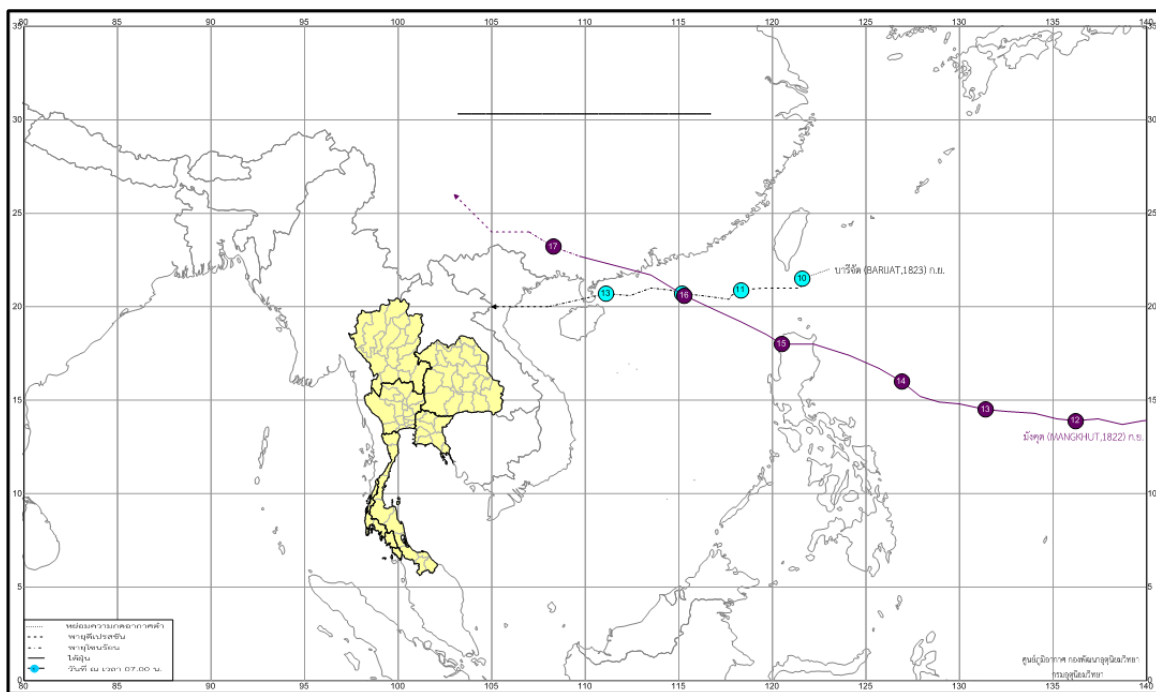
Thailand's weather in September 2018 was dominated by the monsoon trough which lay across the upper Thailand during the first half of the month after that it moved southwards to lie over the lower central, upper southern and eastern parts. Moreover there were 2 tropical cyclones having some effects on rainfall of Thailand during mid-month namely "BARIJAT" (1823) and "MANGKHUT" (1822) coupled with the prevailing of southwest monsoon which over Andaman Sea, Thailand and the Gulf of Thailand, strengthened during mentioned period. These conditions caused plentiful of rain in Thailand almost the whole month. Monthly rainfall was less than normal in most parts of Thailand i.e. northern part 71.5 mm (33%), northeastern part 45.2 mm (19%), central part 63.2 mm (25%), southern part (eastern coast) 24.9 mm (17%) and southern part (west coast) 75.0 mm (18%) except for above normal in eastern part 31.2 mm (9%). The average total rainfall over Thailand in this month was 17 percent lower than normal. The accumulative rainfall this year up to September was 6 percent higher than normal. Mean temperatures were above normal in all parts.

**1 – 10 September:** The southwest monsoon prevailed across the Andaman Sea, Thailand and the Gulf of Thailand throughout the period. During the second half of the period, the moderate high pressure area from China extended its ridge to cover Laos and Vietnam after that it extended to cover upper northern and northeastern parts during late period. It induced the monsoon trough which lay across Myanmar, Laos and upper Vietnam moved downward to lie across upper Thailand. These condition caused scattered to fairly widespread rain nearly the whole period with heavy to very heavy rainfall in some areas. The highest daily rainfall was 154.0 mm at Amphoe Thung Saliam in Sukhothai province on September 8. For southern Thailand, scattered to fairly widespread rain with heavy rainfall in some areas almost the whole period especially heavy rainfall in several areas and very heavy rainfall in some areas occurred along west coast during the beginning and the middle of the period. The maximum daily rainfall of 110.0 mm was measured at Amphoe Mueang in Satun province on September 7.

**11 – 20 September:** Under the influence of the monsoon trough lying across upper Thailand in addition with the active southwest monsoon prevailing over the Andaman Sea, Thailand and the Gulf of Thailand almost the whole period associated with 2 tropical cyclones in upper South China Sea namely tropical storm "BARUIJAT" (1823) and typhoon "MANGKHUT" (1822). BARIJAT moved through Hainan, China to the Gulf of Tokin in afternoon of September 13 and downgraded into a tropical depression before made landfall over upper Vietnam and weakened into a low pressure cell covered Laos in the evening of the same day. "MANGKHUT" made landfall over southern China at Jiangmen City, Guangdong province in the evening of September 16 after that it moved further inland and downgraded respectively into the tropical storm and tropical depression before degenerated into an areas of active low pressure over Yunnan province in the morning of September 18 and dissipated in the next time. The weather in upper Thailand was fairly widespread nearly the whole period with heavy rainfall in several areas and very heavy rainfall in some areas. The heaviest daily rainfall in upper Thailand was 303.0.0 mm at Amphoe Ratchasan in Chachoengsao province on September 16. Flash floods occurred in Lopburi province on September 11, Loei province on September 12, Trat province on

September 17 and Nan province on September 12, 18. Land slide was reported at Mae Hong Son province on September 16. In southern part, fairly widespread rain nearly the whole period with heavy to very heavy rainfall in some areas. The highest daily rainfall was 134.0 mm at Amphoe Ranot in Songkhla province on September 16. The floods had reported at Satun province on September 15 and at Phang Nga province on September 18.

**21 – 31 September:** The monsoon trough lay across lower central, upper southern and eastern parts toward the low pressure cell in the lower South China Sea on the first day and the end of the period associated with prevailing of the southerly and southeasterly winds over northeastern, central, eastern and southern parts during early period then the weak southwest monsoon prevailed over the Andaman Sea, Thailand and the Gulf of Thailand. Moreover, the high pressure area from China extended to cover northern and northeastern parts during late period. These conditions caused rainfall over upper Thailand almost the whole period with heavy rainfall in some areas and very heavy rainfall was reported over northeastern part on the first day of the period. The maximum daily rainfall in upper Thailand was 95.8 mm at King Amphoe Khukhan in Si Sa Ket province on September 21. In southern part, scattered to fairly widespread rain was found nearly the whole period and heavy to very heavy rainfall in some areas mainly along east coast with the highest daily rainfall of 100.0 mm at Amphoe Pa Phayom in Phatthlung province on September 27.



**Track of tropical storm effected on rainfall of Thailand in September 2018**

**Note :** 1) Rainfall, temperatures and natural disasters in this report were updated up to October 5, 2018.

Monthly Current Report  
Rainfall and Accumulative Rainfall  
September 2018

Northern Thailand

| Station        | Temperature (°c) |                             | Rainfall (mm) |                             | Accumulative rainfall (mm)<br>Since 1 January |                             |
|----------------|------------------|-----------------------------|---------------|-----------------------------|---|-----------------------------|
|                | Mean             | Above<br>or below<br>normal | Actual        | Above<br>or below<br>normal | Actual  | Above<br>or below<br>normal |
| Chiang Rai     | 27.3             | 1.1                         | 165.6         | -118.3                      | 1640.1  | 147.7                       |
| Mae Hong Son   | 27.0             | 0.0                         | 155.9         | -43.1                       | 1015.0  | -107.6                      |
| Phayao         | 26.9             | 0.6                         | 201.1         | -2.5                        | 1198.8  | 232.6                       |
| Chiang Mai     | 28.1             | 1.4                         | 64.1          | -147.3                      | 736.4   | -206.8                      |
| Tha Wang Pha   | 27.5             | 0.7                         | 191.8         | -19.7                       | 1735.3  | 449.2                       |
| Nan            | 28.0             | 0.8                         | 95.6          | -107.9                      | 1091.4  | -45.7                       |
| Lamphun        | 27.8             | 0.9                         | 62.7          | -145.5                      | 847.0   | 4.8                         |
| Lampang        | 28.1             | 1.1                         | 129.6         | -82.0                       | 1047.6  | 136.9                       |
| Mae Sariang    | 27.1             | 0.6                         | 183.7         | 6.6                         | 1298.9  | 308.0                       |
| Phrae          | 28.0             | 0.8                         | 85.7          | -106.0                      | 999.0   | 6.4                         |
| Uttaradit      | 28.7             | 0.7                         | 191.1         | -57.2                       | 1223.8  | -5.1                        |
| Bhumibol Dam   | 28.3             | 0.8                         | 204.5         | -3.1                        | 816.1   | 29.0                        |
| Tak            | 28.8             | 1.1                         | 126.1         | -89.4                       | 730.6   | -71.6                       |
| Mae Sot        | 27.0             | 0.8                         | 142.5         | -42.9                       | 1693.3  | 357.4                       |
| Umphang        | 24.9             | 0.5                         | 177.0         | -70.6                       | 1122.6  | -152.6                      |
| Phitsanulok    | 28.4             | 0.3                         | 212.0         | -34.6                       | 1099.8  | -10.2                       |
| Lom Sak        | 27.8             | 0.7                         | 114.6         | -79.0                       | 826.9   | -109.3                      |
| Phetchabun     | 28.0             | 0.9                         | 62.4          | -143.3                      | 921.7   | -101.9                      |
| Wichian Buri   | 28.3             | 0.4                         | 163.9         | -82.2                       | 1231.9  | 167.5                       |
| Kamphaeng Phet | 28.7             | 1.1                         | 206.3         | -62.5                       | 983.1   | -81.1                       |
| Over the area  | 27.7             | 0.7                         | 146.8         | -71.5<br>-33%               | 1113.0  | 47.3<br>4%                  |

Northeastern Thailand

| Station           | Temperature (°c) |                             | Rainfall (mm) |                             | Accumulative rainfall (mm)<br>Since 1 January |                             |
|-------------------|------------------|-----------------------------|---------------|-----------------------------|---|-----------------------------|
|                   | Mean             | Above<br>or below<br>normal | Actual        | Above<br>or below<br>normal | Actual  | Above<br>or below<br>normal |
| Nong Khai         | 28.8             | 1.4                         | 207.5         | -49.7                       | 1667.6  | 169.8                       |
| Loei              | 27.3             | 0.9                         | 151.6         | -83.4                       | 1071.0  | -17.9                       |
| Udon Thani        | 28.3             | 0.7                         | 121.9         | -117.6                      | 1359.7  | 44.6                        |
| Nakhon Phanom     | 28.3             | 1.2                         | 248.6         | -41.6                       | 2745.6  | 510.3                       |
| Sakon Nakhon      | 28.2             | 1.0                         | 160.6         | -64.2                       | 1569.9  | 19.3                        |
| Mukdahan          | 28.4             | 1.2                         | 246.8         | 35.1                        | 1904.1  | 540.6                       |
| Khon Kaen         | 27.9             | 0.7                         | 299.7         | 67.7                        | 1200.2  | 91.1                        |
| Kosum Phisai      | 28.7             | 1.0                         | 158.4         | -82.2                       | 1182.5  | 51.4                        |
| Roi Et            | 28.6             | 1.1                         | 164.8         | -55.0                       | 1202.6  | -14.8                       |
| Chaiyaphum        | 28.1             | 0.8                         | 149.1         | -80.9                       | 821.8   | -155.3                      |
| Ubon Ratchathani  | 28.3             | 0.9                         | 317.0         | 23.2                        | 1645.1  | 210.1                       |
| Tha Tum           | 28.3             | 0.6                         | 185.5         | -77.5                       | 1040.0  | -199.6                      |
| Surin             | 28.0             | 0.7                         | 245.2         | -10.2                       | 1057.2  | -216.2                      |
| Nakhon Ratchasima | 28.2             | 0.8                         | 162.8         | -65.5                       | 902.4   | 3.8                         |
| Chok Chai         | 27.9             | 0.6                         | 148.5         | -63.1                       | 793.1   | -84.8                       |
| Nang Rong         | 27.6             | 0.4                         | 180.1         | -59.5                       | 715.7   | -303.7                      |
| Over the area     | 28.2             | 0.9                         | 196.8         | -45.2<br>-19%               | 1304.9  | 40.5<br>3%                  |

- NOTES :
- 1) Mean temperature is the average of daily dry-bulb temperature
  - 2) "T" is trace, rainfall amount less than 0.1 mm.
  - 3) "blank" is incomplete data.
  - 4) Temperature and rainfall are preliminary data

Monthly Current Report  
Rainfall and Accumulative Rainfal  
September 2018

Central Thailand

| Station            | Temperature ( °c) |                             | Rainfall (mm) |                             | Accumulative rainfall (mm)<br>Since 1 January |                             |
|--------------------|-------------------|-----------------------------|---------------|-----------------------------|---|-----------------------------|
|                    | Mean              | Above<br>or below<br>normal | Actual        | Above<br>or below<br>normal | Actual  | Above<br>or below<br>normal |
| Nakhon Sawan       | 28.9              | 0.9                         | 55.3          | -181.7                      | 838.7   | -125.6                      |
| Bua Chum           | 28.1              | 0.5                         | 214.1         | -37.6                       | 1531.1  | 597.7                       |
| Lop Buri           | 28.8              | 0.8                         | 235.0         | -30.5                       | 1104.8  | 171.0                       |
| Suphan Buri        | 29.2              | 0.9                         | 184.3         | -39.1                       | 681.3   | -46.6                       |
| Thong Pha Phum     | 27.2              | 0.5                         | 155.0         | -86.2                       | 1738.7  | 154.8                       |
| Kanchanaburi       | 28.9              | 0.9                         | 89.0          | -131.5                      | 541.9   | -240.5                      |
| Bangkok Airport    | 28.7              | 0.3                         | 301.4         | 16.5                        | 1396.7  | 256.8                       |
| Bangkok Metropolis | 28.6              | 0.3                         | 318.7         | -15.6                       | 1434.5  | 134.2                       |
| Over the area      | 28.6              | 0.7                         | 194.1         | -63.2<br>-25%               | 1158.5  | 112.8<br>11%                |

Eastern Thailand

| Station       | Temperature ( °c) |                             | Rainfall (mm) |                             | Accumulative rainfall (mm)<br>Since 1 January |                             |
|---------------|-------------------|-----------------------------|---------------|-----------------------------|---|-----------------------------|
|               | Mean              | Above<br>or below<br>normal | Actual        | Above<br>or below<br>normal | Actual  | Above<br>or below<br>normal |
| Prachin Buri  | 28.8              | 0.7                         | 401.1         | 51.7                        | 1844.7  | 219.0                       |
| Kabin Buri    | 27.8              | 0.1                         | 355.3         | 52.0                        | 2088.1  | 678.8                       |
| Aranyaprathet | 28.3              | 0.6                         | 295.6         | 43.3                        | 1253.9  | 123.6                       |
| Chon Buri     | 28.5              | 0.2                         | 397.5         | 128.6                       | 1118.3  | 85.9                        |
| Ko Sichang    | 28.3              | 0.2                         | 253.5         | -15.7                       | 898.3   | -44.4                       |
| Pattaya       | 27.8              | 0.1                         | 252.0         | 47.3                        | 826.8   | 12.6                        |
| Sattahip      | 27.8              | -0.3                        | 417.8         | 198.8                       | 1061.5  | 141.3                       |
| Rayong        | 28.0              | -0.2                        | 152.9         | -102.3                      | 810.9   | -321.2                      |
| Chanthaburi   | 27.7              | 0.5                         | 340.9         | -156.7                      | 2085.7  | -549.6                      |
| Khlong Yai    | 27.0              | 0.1                         | 746.3         | 65.3                        | 4458.4  | 84.9                        |
| Over the area | 28.0              | 0.2                         | 361.3         | 31.2<br>9%                  | 1644.7  | 43.0<br>3%                  |

- NOTES :
- 1) Mean temperature is the average of daily dry-bulb temperature
  - 2) "T" is trace, rainfall amount less than 0.1 mm.
  - 3) "blank" is incomplete data.
  - 4) Temperature and rainfall are preliminary data.

**Monthly Current Report  
Rainfall and Accumulative Rainfall  
September 2018**

Southern Thailand, east coast

| Station             | Temperature ( °c) |                             | Rainfall (mm) |                             | Accumulative rainfall (mm)<br>Since 1 January |                             |
|---------------------|-------------------|-----------------------------|---------------|-----------------------------|---|-----------------------------|
|                     | Mean              | Above<br>or below<br>normal | Actual        | Above<br>or below<br>normal | Actual  | Above<br>or below<br>normal |
| Phetchaburi         | 29.0              | 0.8                         | 84.7          | -68.9                       | 582.4   | -21.1                       |
| Hua Hin             | 28.3              | 0.3                         | 147.4         | 27.0                        | 739.4   | 139.6                       |
| Prachuap Khiri Khan | 28.0              | 0.3                         | 62.1          | -37.4                       | 776.3   | 81.8                        |
| Chumphon            | 27.4              | 0.5                         | 118.1         | -60.2                       | 1369.3  | 159.4                       |
| Surat Thani         | 27.1              | 0.5                         | 92.7          | -95.7                       | 1117.5  | 191.2                       |
| Ko Samui            | 28.4              | 0.5                         | 47.4          | -74.3                       | 1002.9  | 69.5                        |
| Nakhon Si Thammarat | 27.4              | 0.1                         | 191.2         | 29.6                        | 964.0   | -146.6                      |
| Songkhla            | 27.7              | -0.2                        | 110.1         | -26.8                       | 909.5   | 90.5                        |
| Hat Yai Airport     | 26.8              | -0.1                        | 135.8         | -21.5                       | 811.8   | -101.9                      |
| Pattani Airport     | 27.1              | -0.1                        | 163.9         | 16.8                        | 1009.0  | 145.0                       |
| Narathiwat          | 27.1              | -0.1                        | 220.3         | 37.6                        | 1457.6  | 371.8                       |
| Over the area       | 27.7              | 0.3                         | 124.9         | -24.9<br>-17%               | 976.3   | 88.8<br>10%                 |

Southern Thailand, west coast

| Station        | Temperature ( °c) |                             | Rainfall (mm) |                             | Accumulative rainfall (mm)<br>Since 1 January |                             |
|----------------|-------------------|-----------------------------|---------------|-----------------------------|---|-----------------------------|
|                | Mean              | Above<br>or below<br>normal | Actual        | Above<br>or below<br>normal | Actual  | Above<br>or below<br>normal |
| Ranong         | 26.8              | 0.4                         | 524.2         | -122.3                      | 4362.6  | 916.5                       |
| Takua Pa       | 27.0              | 0.3                         | 482.1         | -113.4                      | 3192.8  | 355.6                       |
| Phuket         | 28.1              | 0.6                         | 294.0         | -67.2                       | 1604.1  | -45.5                       |
| Phuket Airport | 28.2              | 0.9                         | 271.9         | -127.2                      | 2176.5  | 330.1                       |
| Ko Lanta       | 27.6              | 0.0                         | 284.6         | -45.7                       | 1341.7  | -306.8                      |
| Trang Airport  | 27.0              | 0.4                         | 284.0         | -21.1                       | 1647.2  | 113.5                       |
| Satun          | 26.9              | 0.0                         | 300.1         | -28.3                       | 1715.4  | 85.3                        |
| Over the area  | 27.4              | 0.4                         | 348.7         | -75.0<br>-18%               | 2291.5  | 207.0<br>10%                |

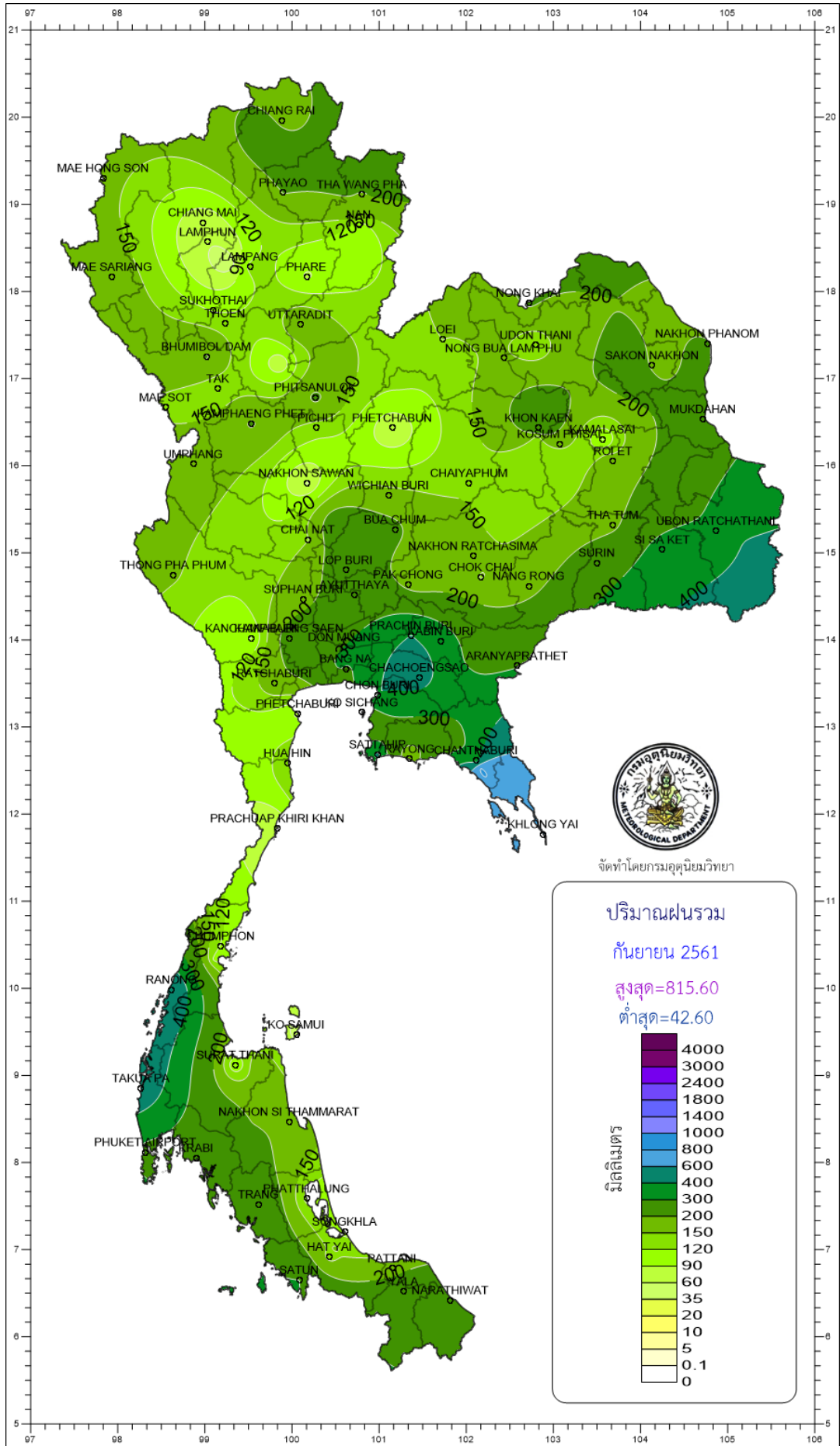
- NOTES :
- 1) Mean temperature is the average of daily dry-bulb temperature
  - 2) "T" is trace, rainfall amount less than 0.1 mm.
  - 3) "blank" is incomplete data.
  - 4) Temperature and rainfall are preliminary data.

**Monthly Current Report**

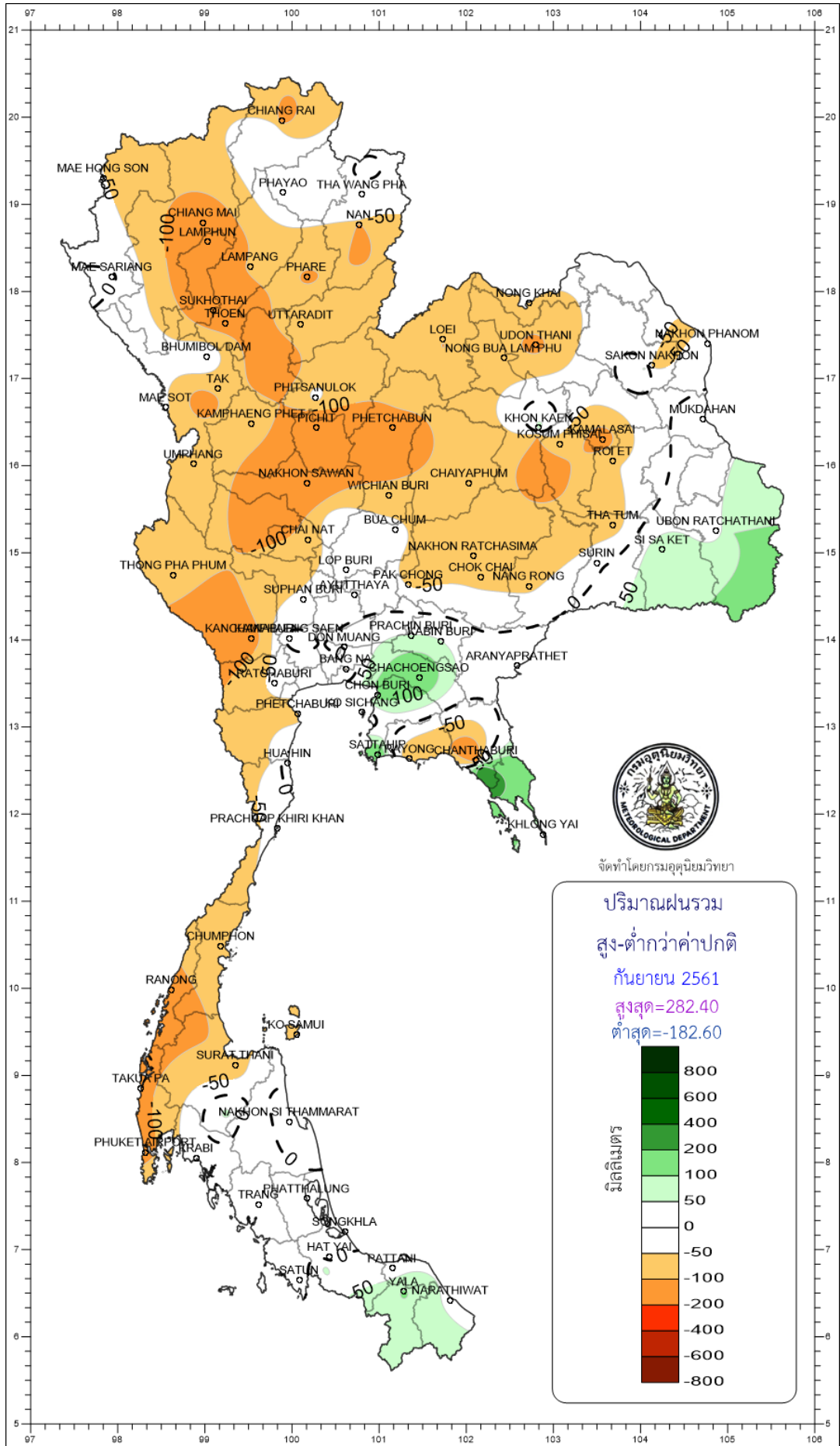
**September 2018**

| Region                | Station             | Temperature ( °c) |                             | Rainfall (mm) |                             | Accumulative rainfall (mm)<br>Since 1 January |                             |
|-----------------------|---------------------|-------------------|-----------------------------|---------------|-----------------------------|---|-----------------------------|
|                       |                     | Mean              | Above<br>or below<br>normal | Actual        | Above<br>or below<br>normal | Actual  | Above<br>or below<br>normal |
| North                 | Chiang Rai          | 27.3              | 1.1                         | 165.6         | -118.3                      | 1640.1  | 147.7                       |
|                       | Mae Hong Son        | 27.0              | 0.0                         | 155.9         | -43.1                       | 1015.0  | -107.6                      |
|                       | Phayao              | 26.9              | 0.6                         | 201.1         | -2.5                        | 1198.8  | 232.6                       |
|                       | Chiang Mai          | 28.1              | 1.4                         | 64.1          | -147.3                      | 736.4   | -206.8                      |
|                       | Tha Wang Pha        | 27.5              | 0.7                         | 191.8         | -19.7                       | 1735.3  | 449.2                       |
|                       | Nan                 | 28.0              | 0.8                         | 95.6          | -107.9                      | 1091.4  | -45.7                       |
|                       | Lamphun             | 27.8              | 0.9                         | 62.7          | -145.5                      | 847.0   | 4.8                         |
|                       | Lampang             | 28.1              | 1.1                         | 129.6         | -82.0                       | 1047.6  | 136.9                       |
|                       | Mae Sariang         | 27.1              | 0.6                         | 183.7         | 6.6                         | 1298.9  | 308.0                       |
|                       | Phrae               | 28.0              | 0.8                         | 85.7          | -106.0                      | 999.0   | 6.4                         |
|                       | Uttaradit           | 28.7              | 0.7                         | 191.1         | -57.2                       | 1223.8  | -5.1                        |
|                       | Bhumibol Dam        | 28.3              | 0.8                         | 204.5         | -3.1                        | 816.1   | 29.0                        |
|                       | Tak                 | 28.8              | 1.1                         | 126.1         | -89.4                       | 730.6   | -71.6                       |
|                       | Mae Sot             | 27.0              | 0.8                         | 142.5         | -42.9                       | 1693.3  | 357.4                       |
|                       | Umphang             | 24.9              | 0.5                         | 177.0         | -70.6                       | 1122.6  | -152.6                      |
|                       | Phitsanulok         | 28.4              | 0.3                         | 212.0         | -34.6                       | 1099.8  | -10.2                       |
|                       | Lom Sak             | 27.8              | 0.7                         | 114.6         | -79.0                       | 826.9   | -109.3                      |
|                       | Phetchabun          | 28.0              | 0.9                         | 62.4          | -143.3                      | 921.7   | -101.9                      |
| Wichian Buri          | 28.3                | 0.4               | 163.9                       | -82.2         | 1231.9                      | 167.5   |                             |
| Kamphaeng Phet        | 28.7                | 1.1               | 206.3                       | -62.5         | 983.1                       | -81.1   |                             |
| Northeast             | Nong Khai           | 28.8              | 1.4                         | 207.5         | -49.7                       | 1667.6  | 169.8                       |
|                       | Loei                | 27.3              | 0.9                         | 151.6         | -83.4                       | 1071.0  | -17.9                       |
|                       | Udon Thani          | 28.3              | 0.7                         | 121.9         | -117.6                      | 1359.7  | 44.6                        |
|                       | Nakhon Phanom       | 28.3              | 1.2                         | 248.6         | -41.6                       | 2745.6  | 510.3                       |
|                       | Sakon Nakhon        | 28.2              | 1.0                         | 160.6         | -64.2                       | 1569.9  | 19.3                        |
|                       | Mukdahan            | 28.4              | 1.2                         | 246.8         | 35.1                        | 1904.1  | 540.6                       |
|                       | Khon Kaen           | 27.9              | 0.7                         | 299.7         | 67.7                        | 1200.2  | 91.1                        |
|                       | Kosum Phisai        | 28.7              | 1.0                         | 158.4         | -82.2                       | 1182.5  | 51.4                        |
|                       | Roi Et              | 28.6              | 1.1                         | 164.8         | -55.0                       | 1202.6  | -14.8                       |
|                       | Chaiyaphum          | 28.1              | 0.8                         | 149.1         | -80.9                       | 821.8   | -155.3                      |
|                       | Ubon Ratchathani    | 28.3              | 0.9                         | 317.0         | 23.2                        | 1645.1  | 210.1                       |
|                       | Tha Tum             | 28.3              | 0.6                         | 185.5         | -77.5                       | 1040.0  | -199.6                      |
|                       | Surin               | 28.0              | 0.7                         | 245.2         | -10.2                       | 1057.2  | -216.2                      |
|                       | Nakhon Ratchasima   | 28.2              | 0.8                         | 162.8         | -65.5                       | 902.4   | 3.8                         |
| Chok Chai             | 27.9                | 0.6               | 148.5                       | -63.1         | 793.1                       | -84.8   |                             |
| Nang Rong             | 27.6                | 0.4               | 180.1                       | -59.5         | 715.7                       | -303.7  |                             |
| Central               | Nakhon Sawan        | 28.9              | 0.9                         | 55.3          | -181.7                      | 838.7   | -125.6                      |
|                       | Bua Chum            | 28.1              | 0.5                         | 214.1         | -37.6                       | 1531.1  | 597.7                       |
|                       | Lop Buri            | 28.8              | 0.8                         | 235.0         | -30.5                       | 1104.8  | 171.0                       |
|                       | Suphan Buri         | 29.2              | 0.9                         | 184.3         | -39.1                       | 681.3   | -46.6                       |
|                       | Thong Pha Phum      | 27.2              | 0.5                         | 155.0         | -86.2                       | 1738.7  | 154.8                       |
|                       | Kanchanaburi        | 28.9              | 0.9                         | 89.0          | -131.5                      | 541.9   | -240.5                      |
|                       | Bangkok Airport     | 28.7              | 0.3                         | 301.4         | 16.5                        | 1396.7  | 256.8                       |
|                       | Bangkok Metropolis  | 28.6              | 0.3                         | 318.7         | -15.6                       | 1434.5  | 134.2                       |
| East                  | Prachin Buri        | 28.8              | 0.7                         | 401.1         | 51.7                        | 1844.7  | 219.0                       |
|                       | Kabin Buri          | 27.8              | 0.1                         | 355.3         | 52.0                        | 2088.1  | 678.8                       |
|                       | Aranyaprathet       | 28.3              | 0.6                         | 295.6         | 43.3                        | 1253.9  | 123.6                       |
|                       | Chon Buri           | 28.5              | 0.2                         | 397.5         | 128.6                       | 1118.3  | 85.9                        |
|                       | Ko Sichang          | 28.3              | 0.2                         | 253.5         | -15.7                       | 898.3   | -44.4                       |
|                       | Pattaya             | 27.8              | 0.1                         | 252.0         | 47.3                        | 826.8   | 12.6                        |
|                       | Sattahip            | 27.8              | -0.3                        | 417.8         | 198.8                       | 1061.5  | 141.3                       |
|                       | Rayong              | 28.0              | -0.2                        | 152.9         | -102.3                      | 810.9   | -321.2                      |
|                       | Chanthaburi         | 27.7              | 0.5                         | 340.9         | -156.7                      | 2085.7  | -549.6                      |
|                       | Khlong Yai          | 27.0              | 0.1                         | 746.3         | 65.3                        | 4458.4  | 84.9                        |
| South<br>(East Coast) | Phetchaburi         | 29.0              | 0.8                         | 84.7          | -68.9                       | 582.4   | -21.1                       |
|                       | Hua Hin             | 28.3              | 0.3                         | 147.4         | 27.0                        | 739.4   | 139.6                       |
|                       | Prachuap Khiri Khan | 28.0              | 0.3                         | 62.1          | -37.4                       | 776.3   | 81.8                        |
|                       | Chumphon            | 27.4              | 0.5                         | 118.1         | -60.2                       | 1369.3  | 159.4                       |
|                       | Surat Thani         | 27.1              | 0.5                         | 92.7          | -95.7                       | 1117.5  | 191.2                       |
|                       | Ko Samui            | 28.4              | 0.5                         | 47.4          | -74.3                       | 1002.9  | 69.5                        |
|                       | Nakhon Si Thammarat | 27.4              | 0.1                         | 191.2         | 29.6                        | 964.0   | -146.6                      |
|                       | Songkhla            | 27.7              | -0.2                        | 110.1         | -26.8                       | 909.5   | 90.5                        |
|                       | Hat Yai Airport     | 26.8              | -0.1                        | 135.8         | -21.5                       | 811.8   | -101.9                      |
|                       | Pattani Airport     | 27.1              | -0.1                        | 163.9         | 16.8                        | 1009.0  | 145.0                       |
|                       | Narathiwat          | 27.1              | -0.1                        | 220.3         | 37.6                        | 1457.6  | 371.8                       |
| South<br>(West Coast) | Ranong              | 26.8              | 0.4                         | 524.2         | -122.3                      | 4362.6  | 916.5                       |
|                       | Takua Pa            | 27.0              | 0.3                         | 482.1         | -113.4                      | 3192.8  | 355.6                       |
|                       | Phuket              | 28.1              | 0.6                         | 294.0         | -67.2                       | 1604.1  | -45.5                       |
|                       | Phuket Airport      | 28.2              | 0.9                         | 271.9         | -127.2                      | 2176.5  | 330.1                       |
|                       | Ko Lanta            | 27.6              | 0.0                         | 284.6         | -45.7                       | 1341.7  | -306.8                      |
|                       | Trang Airport       | 27.0              | 0.4                         | 284.0         | -21.1                       | 1647.2  | 113.5                       |
|                       | Satun               | 26.9              | 0.0                         | 300.1         | -28.3                       | 1715.4  | 85.3                        |
|                       | Over the area       | 27.9              | 0.6                         | 209.2         | -43.7                       | 1328.2  | 74.3                        |
|                       |                     |                   |                             |               | -17%                        |   | 6%                          |

- NOTES :
- 1) Mean temperature is the average of daily dry-bulb temperature
  - 2) "T" is trace, rainfall amount less than 0.1 mm.
  - 3) "blank" is incomplete data.
  - 4) Temperature and rainfall are preliminary data.



จัดทำโดยกรมอุตุนิยมวิทยา



จัดทำโดยกรมอุตุนิยมวิทยา



